



distinctive
medical

TAMPER EVIDENT BAGS

MEDICAL RANGE



CRPHARM

Product: Pharmacy Carrier
Code: CRPHARM
Colours: Green
Size: 460 x 360 x 150mm
Weight / Strength: 330 Denier
Customisable: Yes



GTPHARM

Product: Pharmacy Gusset
Code: GTPHARM
Colours: Green
Size: 410 x 310 x 102mm
Weight / Strength: 330 Denier
Customisable: Yes



CRCYTOX

Product: Cytotoxic Carrier
Code: CRCYTOX
Colours: Yellow
Size: 460 x 360 x 102mm
Weight / Strength: 330 Denier
Customisable: Yes

MEDICAL RANGE / TRANSPORT BAGS



MCMED

Product: Medical Records Carrier
Code: MCMED
Colours: Blue
Size: 360 x 305 x 290mm
Weight / Strength: 550 Denier
Customisable: Yes



IG410

Product: Gusset Style Envopak - Small
Code: IG410
Colours: Blue, Green
Size: 457 x 305 x 102mm
Weight / Strength: 550 Denier
Customisable: Yes



IG412

Product: Gusset Style Envopak - Large
Code: IG412
Colours: Blue, Green
Size: 457 x 356 x 102mm
Weight / Strength: 550 Denier
Customisable: Yes

TRANSPORT BAGS



ICCI

Product: Collapsible Box Carrier
Code: ICCI
Colours: Green
Size: 457 x 356 x 356mm
Weight / Strength: 550 Denier
Customisable: Yes



A58L

Product: A5 8L Bag
Code: A58L
Colours: Red
Size: 300 x 250 x 100mm
Weight / Strength: Light Duty PVC
Customisable: Yes



A412L

Product: A4 12L Bag
Code: A412L
Colours: Blue, Orange, Red
Size: 406 x 305 x 100mm
Weight / Strength: Light Duty PVC
Customisable: Yes

TRANSPORT BAGS / POUCHES



A420L

Product: A4 20L Bag
Code: A420L
Colours: Blue, Red
Size: 406 x 305 x 150mm
Weight / Strength: Light Duty PVC
Customisable: Yes



A320L

Product: A3 20L Bag
Code: A320L
Colours: Blue
Size: 406 x 485 x 100mm
Weight / Strength: Light Duty PVC
Customisable: Yes



A5FLAT

Product: A5 Flat
Code: A5FLAT
Colours: Blue, Red, Clear
Size: 300 x 250mm
Weight / Strength: Light Duty PVC
Customisable: Yes

TRANSPORT POUCHES / CASH BAGS



Product: A4 Flat
Code: A4FLAT
Colours: Blue, Red, Clear
Size: 406 x 305mm
Weight / Strength: Light Duty PVC
Customisable: Yes

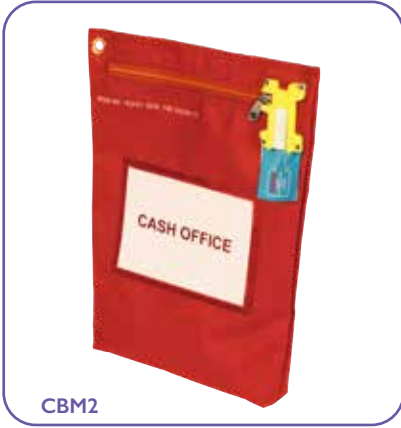


Product: A3 Flat
Code: A3FLAT
Colours: Red
Size: 406 x 485mm
Weight / Strength: Light Duty PVC
Customisable: Yes



Product: Cash Bag Short Edge Zip
Code: CBI
Colours: Blue, Plastolene
Size: 254 x 254 x 38mm
Weight / Strength: 550 Denier
Customisable: No

CASH BAGS / KEY WALLETS



CBM2

Product: Cash Bag Long Edge Zip
Code: CBM2
Colours: Blue, Red
Size: 330 x 285 x 38mm
Weight / Strength: 550 Denier
Customisable: No



IKW104

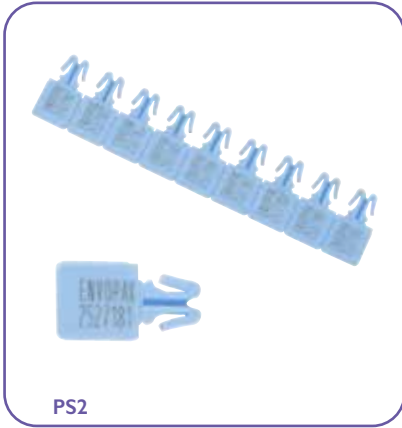
Product: Key Wallet Flat Style
Code: KW104A
Colours: Blue, Plastolene
Size: 152 x 152mm
Weight / Strength: 550 Denier
Customisable: No



KWI1C

Product: Key Wallet Pouch Style
Code: KWI1C
Colours: Blue
Size: 178 x 127 x 38mm
Weight / Strength: 550 Denier
Customisable: No

TAMPER EVIDENT SEALS



Product: PS2 Seal
Code: PS2
Colours: Red, Blue, White, Green, Orange, Yellow
Customisable: No
Pack Size: 1000

Additional Information: Printed with 7 digit sequential number as standard. Available numbered or unnumbered.



Product: PS4 Seal
Code: PS4
Colours: Red, Blue, White, Green, Yellow
Customisable: Yes
Pack Size: 1000

Additional Information: New design for easier application. Seals can be printed with barcodes, logos or sequential numbers.

Visit www.distinctivemedical.com to see our full range of tamper evident security seals.



Seymour Court, Tudor Road, Manor Park, Runcorn, Cheshire WA7 1SY
01928 571 801 | info@distinctivemedical.com | www.distinctivemedical.com

Registered in the UK. Registered office: Seymour Court, Tudor Road, Manor Park, Runcorn, Cheshire WA7 1SY
VAT Registration No. 775518887