



**TAMPER EVIDENT**

# TAMPER EVIDENT

Telephone:  
**01928 571801**

Email:  
**[info@distinctivemedical.com](mailto:info@distinctivemedical.com)**

Web:  
**[www.distinctivemedical.com](http://www.distinctivemedical.com)**



## Purchase Orders:

We accept purchase orders from all organisations as well as BACS payments.



Maintaining the integrity of items moving around hospitals has never been more important. Our range of tamper evident bags, seals, tapes and caps provide cost effective solutions to suit your needs. All of our products can be customised to your requirements. A tamper evident audit-trail has never been easier.

Tamper evident bags can be manufactured in almost any shape, size or colour to suit different situations. Customised bags have a minimum order quantity of 30 bags per style.

If there is an existing bag that meets your needs, but you would like to tailor it to your organisation's requirements, then this can be easily achieved. Contact Distinctive Medical today, by phoning **01928 571801** or e-mail: **[info@distinctivemedical.com](mailto:info@distinctivemedical.com)** to receive more information on customised bags.

## COLOUR

The colour of your tamper evident bag can be changed to any stock colour.



## PRINT

If there is an existing tamper evident bag that is suitable for your needs, the text and logo on the bag can be modified, or we can create your design from scratch.

## SIZE

Completely bespoke bags can be requested, which allows the bag to be manufactured in your chosen shape, size, text and colour. The bag can be tailored to your requirements.

# MEDICAL RANGE



CRPHARM

Product:	Pharmacy Carrier
Code:	CRPHARM
Colours:	Green
Size:	460 x 360 x 150mm
Weight / Strength:	330 Denier
Customisable:	Yes



GTPHARM

Product:	Pharmacy Gusset
Code:	GTPHARM
Colours:	Green
Size:	410 x 310 x 102mm
Weight / Strength:	330 Denier
Customisable:	Yes



CRCYTOX

Product:	Cytotoxic Carrier
Code:	CRCYTOX
Colours:	Yellow
Size:	460 x 360 x 102mm
Weight / Strength:	330 Denier
Customisable:	Yes

# MEDICAL RANGE / COLD CHAIN BAGS



MCMED

Product:	Medical Records Carrier
Code:	MCMED
Colours:	Blue
Size:	360 x 305 x 290mm
Weight / Strength:	550 Denier
Customisable:	Yes



2990

Product:	3 Litre Thermal/Vaccine Bag
Code:	2990
Colours:	Blue
Size:	370 x 270 x 110mm
Estimated Capacity:	20 HPV packs – without the use of coolants



9221

Product:	10 Litre Thermal/Vaccine Bag
Code:	2991
Colours:	Blue
Size:	410 x 280 x 220mm
Estimated Capacity:	80 HPV packs – without the use of coolants
Additional Information:	Comes with a thick insulation pillow & 1 thermal separator



# COLD CHAIN BAGS



2992

Product:	20 Litre Thermal/ Vaccine Bag
Code:	2992
Colours:	Blue
Size:	410 x 280 x 340mm
Estimated Capacity:	120 HPV packs – without the use of coolants
Additional Information:	Comes with a thick insulation pillow & 2 thermal separators



2993

Product:	30 Litre Thermal/ Vaccine Bag
Code:	2993
Colours:	Blue
Size:	430 x 340 x 350mm
Estimated Capacity:	220 HPV packs – without the use of coolants
Additional Information:	Comes with a thick insulation pillow & 3 thermal separators

Data reports for all cold chain bags are available upon request.

Cold chain bags should be used in conjunction with an air temperature thermometer when storing temperature sensitive drugs.



10368

Product:	Memory Monitoring Refrigerator Thermometer
Code:	10368
Colours:	White
Size:	H108 x W70 x D16
Cable Length:	10m
Reading Accuracy:	+/- 0.1°C
Temperature Range:	-50°C to 70

# TRANSPORT BAGS



IG410

**Product:** Gusset Style Envopak - Small  
**Code:** IG410  
**Colours:** Blue, Green  
**Size:** 457 x 305 x 102mm  
**Weight / Strength:** 550 Denier  
**Customisable:** Yes



IG412

**Product:** Gusset Style Envopak - Large  
**Code:** IG412  
**Colours:** Blue, Green  
**Size:** 457 x 356 x 102mm  
**Weight / Strength:** 550 Denier  
**Customisable:** Yes



ICCI

**Product:** Collapsible Box Carrier  
**Code:** ICCI  
**Colours:** Green  
**Size:** 457 x 356 x 356mm  
**Weight / Strength:** 550 Denier  
**Customisable:** Yes

# TRANSPORT BAGS



A58L

**Product:** A5 8L Bag  
**Code:** A58L  
**Colours:** Red  
**Size:** 300 x 250 x 100mm  
**Weight / Strength:** Light Duty PVC  
**Customisable:** Yes



A412L

**Product:** A4 12L Bag  
**Code:** A412L  
**Colours:** Blue, Orange, Red  
**Size:** 406 x 305 x 100mm  
**Weight / Strength:** Light Duty PVC  
**Customisable:** Yes



A420L

**Product:** A4 20L Bag  
**Code:** A420L  
**Colours:** Blue, Red  
**Size:** 406 x 305 x 150mm  
**Weight / Strength:** Light Duty PVC  
**Customisable:** Yes

# TRANSPORT BAGS / POUCHES



A320L

**Product:** A3 20L Bag  
**Code:** A320L  
**Colours:** Blue  
**Size:** 406 x 485 x 100mm  
**Weight / Strength:** Light Duty PVC  
**Customisable:** Yes



A5FLAT

**Product:** A5 Flat  
**Code:** A5FLAT  
**Colours:** Blue, Red, Clear  
**Size:** 300 x 250mm  
**Weight / Strength:** Light Duty PVC  
**Customisable:** Yes



A4FLAT

**Product:** A4 Flat  
**Code:** A4FLAT  
**Colours:** Blue, Red, Clear  
**Size:** 406 x 305mm  
**Weight / Strength:** Light Duty PVC  
**Customisable:** Yes

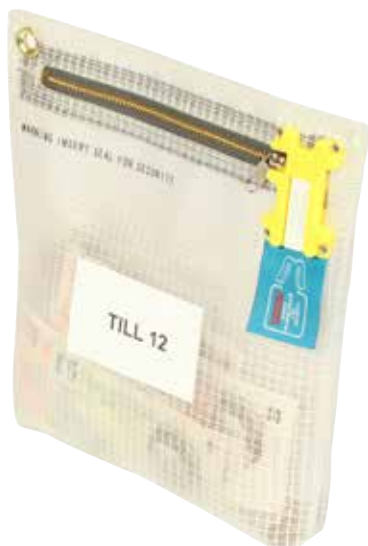


# TRANSPORT POUCHES / CASH BAGS & WALLETS



A3FLAT

**Product:** A3 Flat  
**Code:** A3FLAT  
**Colours:** Red  
**Size:** 406 x 485mm  
**Weight / Strength:** Light Duty PVC  
**Customisable:** Yes



CB1

**Product:** Cash Bag Short Edge Zip  
**Code:** CB1  
**Colours:** Blue, Plastolene  
**Size:** 254 x 254 x 38mm  
**Weight / Strength:** 550 Denier  
**Customisable:** No



CBM2

**Product:** Cash Bag Long Edge Zip  
**Code:** CBM2  
**Colours:** Blue, Red  
**Size:** 330 x 285 x 38mm  
**Weight / Strength:** 550 Denier  
**Customisable:** No

# CASH BAGS & WALLETS / SINGLE USE BAGS



IKWI04

Product:	Key Wallet Flat Style
Code:	KWI04A
Colours:	Blue, Plastolene
Size:	152 x 152mm
Weight / Strength:	550 Denier
Customisable:	No



KWIIC

Product:	Key Wallet Pouch Style
Code:	KWIIC
Colours:	Blue
Size:	178 x 127 x 38mm
Weight / Strength:	550 Denier
Customisable:	No



Security  
at your  
fingertips.

# SINGLE USE BAGS



KSTE-CI-500

Product:	Keep Safe Bags Clear - Small
Code:	KSTE-CI-500
Colours:	Clear
Size:	160 x 260mm
Weight / Strength:	Made From Durable Polyethylene Film
Customisable:	No



KSTE-C2-500

Product:	Keep Safe Bags Clear - Medium
Code:	KSTE-C2-500
Colours:	Clear
Size:	225 x 305mm
Weight / Strength:	Made From Durable Polyethylene Film
Customisable:	No



KSTE-C3-500

Product:	Keep Safe Bags Clear - Large
Code:	KSTE-C3-500
Colours:	Clear
Size:	340 x 430mm
Weight / Strength:	Made From Durable Polyethylene Film
Customisable:	No

# SINGLE USE BAGS



KTSE-I-500

Product:	Keep Safe Bags White - Small
Code:	KTSE-I-500
Colours:	White
Size:	160 x 260mm
Weight / Strength:	Made From Durable Polyethylene Film
Customisable:	No



KTSE-2-500

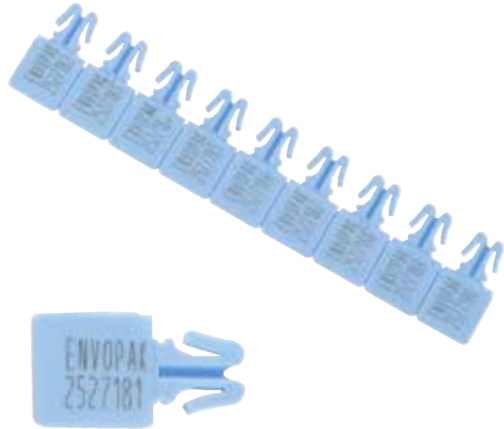
Product:	Keep Safe Bags White - Medium
Code:	KTSE-2-500
Colours:	White
Size:	225 x 305mm
Weight / Strength:	Made From Durable Polyethylene Film
Customisable:	No



KTSE-3-500

Product:	Keep Safe Bags White - Large
Code:	KTSE-3-500
Colours:	White
Size:	340 x 430mm
Weight / Strength:	Made From Durable Polyethylene Film
Customisable:	No

# TAMPER EVIDENT SEALS



PS2

Product:	<b>PS2 Seal</b>
Code:	PS2
Colours:	Red, Blue, White, Green, Orange, Yellow
Customisable:	No
Pack Size:	1000
Additional Information:	Printed with 7 digit sequential number as standard. Available numbered or unnumbered.



PS4

Product:	<b>PS4 Seal</b>
Code:	PS4
Colours:	Red, Blue, White, Green, Yellow
Customisable:	Yes
Pack Size:	1000
Additional Information:	New design for easier application. Seals can be printed with barcodes, logos or sequential numbers.



NSDM

Product:	<b>Envotite Numbered Seal</b>
Code:	NSDM
Colours:	Blue, Yellow, Red, Green
Size:	149mm
Weight / Strength:	Breaking Strength: 1/6
Customisable:	Yes
Pack Size:	1000
Additional Information:	Ideal for trolleys, boxes, cases, fire extinguishers and first aid boxes. Designed to be removed by hand.



# TAMPER EVIDENT SEALS



PES

<b>Product:</b>	<b>Envotite Un-Numbered Seal</b>
<b>Code:</b>	PES
<b>Colours:</b>	Blue, Yellow, Red, Green
<b>Size:</b>	149mm
<b>Weight / Strength:</b>	Breaking Strength: 1/6
<b>Customisable:</b>	Yes
<b>Pack Size:</b>	1000
<b>Additional Information:</b>	Ideal for trolleys, boxes, cases, fire extinguishers and first aid boxes. Designed to be removed by hand.



18318

<b>Product:</b>	<b>Padlock Seal Un-Numbered</b>
<b>Code:</b>	18318
<b>Colours:</b>	Blue, Green, Red, Yellow
<b>Size:</b>	35mm
<b>Breaking Strength:</b>	Breaking Strength: 3/6
<b>Customisable:</b>	No
<b>Additional Information:</b>	Ideal for tote boxes and trolleys. Designed to be removed by hand.



18317

<b>Product:</b>	<b>Padlock Seal Numbered</b>
<b>Code:</b>	18317
<b>Colours:</b>	Blue, Green, Red, Yellow
<b>Size:</b>	35mm
<b>Breaking Strength:</b>	Breaking Strength: 3/6
<b>Customisable:</b>	No
<b>Additional Information:</b>	Ideal for tote boxes and trolleys. Designed to be removed by hand.

# TAMPER EVIDENT SEALS



MINIFLEX

Product:	<b>Miniflex Seal</b>
Code:	MINIFLEX
Colours:	Blue, Green
Size:	113mm
Weight / Strength:	Breaking Strength: 3/6
Customisable:	No
Pack Size:	1000
Additional Information:	Ideal for sealing medical trolleys, cases, curtain buckles and tote boxes. Designed to be removed by hand.



GRIPSEAL

Product:	<b>Grip Seal</b>
Code:	GRIPSEAL
Colours:	Blue, Green, Yellow
Size:	408mm
Weight / Strength:	Breaking Strength: 4/6
Customisable:	No
Pack Size:	1000
Additional Information:	Ideal for sealing sacks. Designed to be removed by hand.



OII

Product:	<b>Omega II Seals</b>
Code:	OII
Colours:	White, Yellow
Size:	140mm
Breaking Strength:	Breaking Strength: 4/6
Customisable:	No
Pack Size:	1000
Additional Information:	Ideal for sealing smaller apertures. Designed to be removed by hand.

# TAMPER EVIDENT SEALS / TAMPER EVIDENT TAPE



PES

Product:	<b>Ringlok Seal</b>
Code:	R215G
Colours:	Green
Size:	215mm
Weight / Strength:	Breaking Strength: 2/6
Customisable:	No
Pack Size:	1000
Additional Information:	Ideal for sealing fire exit doors. Designed to be removed by hand.



PULLFLY

Product:	<b>Pull Fly Baby Seal</b>
Code:	PULLFLY
Colours:	Blue, Green, Yellow, Red, Orange, White
Size:	127mm
Weight / Strength:	Breaking Strength: 1/6
Customisable:	No
Additional Information:	Ideal for emergency boxes or trolleys where immediate access is key. Designed to be removed by hand.



I228I

Product:	<b>Integrity Tamper Evident Tape Strip</b>
Code:	I228I
Colours:	Red
Size:	12mm Wide x 2.7m Long
Customisable:	No
Additional Information:	Tape strips mould easily to almost any item and self-destruct when removed to show tampering.

# TROLLEYS



3TRGT1/2

**Product:**

**GT1 Trolley**

**Code:**

**3TRGT1/2**

**Colours:**

**Blue**

**Trolley Size:**

**915 x 610 x 1000mm**

**Basket Size:**

**485 x 460 x 255mm**

**Optional rear pannier size: 130 x 460 x 350mm**

**Customisable:**

**No**

**Capacity:**

**80kg Capacity**



3TRGT1/2

**Product:**

**GT2 Trolley**

**Code:**

**3TRGT2/2**

**Colours:**

**Blue**

**Trolley Size:**

**1030 x 610 x 1000mm**

**Basket Size:**

**635 x 460 x 255mm**

**Optional rear pannier size: 130 x 460 x 350mm**

**Customisable**

**No**

**Capacity:**

**100kg Capacity**



3TRGT3/2

**Product:**

**GT3 Trolley**

**Code:**

**3TRGT3/2**

**Colours:**

**Blue**

**Trolley Size:**

**1200 x 610 x 1070mm**

**Basket Size:**

**960 x 425 x 255mm**

**Customisable:**

**No**

**Capacity:**

**300kg capacity**

# TROLLEYS



3TRSEN

**Product:** The Senior Trolley  
**Code:** 3TRSEN  
**Colours:** Red  
**Size:** 855 x 590 x 1020mm  
**Customisable:** No  
**Capacity:** 90kg Capacity



3TRMIN

**Product:** The Minor Trolley  
**Code:** 3TRMIN  
**Colours:** Red  
**Size:** 740 x 520 x 1035mm  
**Customisable:** No  
**Capacity:** 50kg capacity

Strong,  
Safe,  
Reliable.





# TRANSFER BOXES



5536

**Product:** Hinged Lid Transfer Box  
**Code:** 5536  
**Colours:** Red, Grey, Blue  
**Size:** Top: 682 x 428 x 307mm  
Bottom: 619 x 374mm  
**Customisable:** No  
**Additional Information:** Moulded-in handle grips.  
Reinforced ribs for extra strength.  
Stack when full, nest when empty.

Unit Cost

£45.00



5545

**Product:** Hinged Lid Transfer Box  
**Code:** 5545  
**Colours:** Red, Grey, Blue  
**Size:** Top: 701 x 525 x 395mm  
Bottom: 654 x 476mm  
**Customisable:** No  
**Additional Information:** Moulded-in handle grips.  
Reinforced ribs for extra strength.  
Stack when full, nest when empty.

Unit Cost

£50.51



5515

**Product:** Hinged Lid Transfer Box  
**Code:** 5515  
**Colours:** Red, Grey, Blue  
**Size:** Top: 555 x 385 x 234mm  
Bottom: 484mm x 343mm  
**Customisable:** No  
**Additional Information:** Moulded-in handle grips.  
Reinforced ribs for extra strength.  
Stack when full, nest when empty.

Unit Cost

22.33

# TRANSFER BOXES



5534

**Product:** Hinged Lid Transfer Box  
**Code:** 5534  
**Colours:** Blue, Grey, Semi-Clear  
**Size:** Top: 384 x 276 x 247mm  
 Bottom: 323 x 196mm  
**Customisable:** No  
**Additional Information:** Reinforced ribs for extra strength. Stack when full, nest when empty.

**Unit Cost**

£23.21



5551-01

**Product:** Hinged Lid Transfer Box  
**Code:** 5551-01  
**Colours:** Red, Grey, Blue  
**Size:** Top: 552 x 384 x 330mm  
 Bottom: 469 x 323mm  
**Customisable:** No  
**Additional Information:** Reinforced ribs for extra strength. Stack when full, nest when empty.

**Unit Cost**

£22.95



5531

**Product:** Hinged Lid Transfer Box  
**Code:** 5531  
**Colours:** Blue, Grey, Semi-Clear  
**Size:** Top: 298 x 247 x 196mm  
 Bottom: 234 x 177mm  
**Customisable:** No  
**Additional Information:** Reinforced ribs for extra strength. Stack when full, nest when empty.

**Unit Cost**

£13.43

# TRANSFER BOXES



5532

**Product:** Hinged Lid Transfer Box  
**Code:** 5532  
**Colours:** Blue, Grey, Semi-Clear  
**Size:** Top: 501 x 298 x 184mm  
 Bottom: 428 x 234mm  
**Customisable:** No  
**Additional Information:** Moulded-in handle grips  
 Reinforced ribs for extra strength.  
 Stack when full, nest when empty.

**Unit Cost**

£26.40



5510

**Product:** Hinged Lid Transfer Box  
**Code:** 5510  
**Colours:** Grey  
**Size:** Top: 523 x 336 x 292mm  
 Bottom: 450.85 x 279mm  
**Customisable:** No  
**Additional Information:** Reinforced ribs for extra strength.  
 Stack when full, nest when empty.

**Unit Cost**

£37.19



5535

**Product:** Hinged Lid Transfer Box  
**Code:** 5535  
**Colours:** Semi-Clear  
**Size:** Top: 555 x 385 x 234mm  
 Bottom: 484 x 338mm  
**Customisable:** No  
**Additional Information:** Reinforced ribs for extra strength.  
 Stack when full, nest when empty.

**Unit Cost**

£32.62

# TRANSFER BOXES



5533

**Product:** Hinged Lid Transfer Box  
**Code:** 5533  
**Colours:** Semi-Clear  
**Size:** Top: 552 x 382 x 327mm  
Bottom: 437 x 323mm  
**Customisable:** No  
**Additional Information:** Reinforced ribs for extra strength.  
Stack when full, nest when empty.

<b>Unit Cost</b>
<b>£34.72</b>



5537

**Product:** Hinged Lid Transfer Box  
**Code:** 5537  
**Colours:** Semi-Clear  
**Size:** Top: 682 x 428 x 307mm  
Bottom: 619 x 374mm  
**Customisable:** No  
**Additional Information:** Reinforced ribs for extra strength.  
Stack when full, nest when empty.

<b>Unit Cost</b>
<b>£45.85</b>



5550-01

**Product:** Hinged Lid Transfer Box  
**Code:** 5550-01  
**Colours:** Grey  
**Size:** Top: 546 x 381 x 228mm  
Bottom: 463 x 311mm  
**Customisable:** No  
**Additional Information:** Reinforced ribs for extra strength.  
Stack when full, nest when empty.

<b>Unit Cost</b>
<b>£34.23</b>

# TRANSFER BOXES



5552-01

Product:	Ultra Deep Box
Code:	5552-01
Colours:	Grey
Size:	Top: 546 x 469 x 430mm Bottom: 469 x 323mm
Customisable:	No
Additional Information:	Lid can be secured with a tamper evident seal. Stack when filled and nest when empty.

Unit Cost

£40.28



5540

Product:	Extra Long Box
Code:	5540
Colours:	Grey
Size:	Top: 990 x 355 x 330mm Bottom: 922 x 279mm
Customisable:	No
Additional Information:	Super tough design. Full length steel hinge pins.

Unit Cost

£40.82



18763

Product:	Plastic Dolly
Code:	18763
Colours:	Blue
Size:	762 x 457 x 177mm
Weight:	544kg
Customisable:	No
Additional info:	Steel-reinforced one piece, flush deck design for efficient and affordable supply transport / Assembly required.

Unit Cost

£75.53





3 Seymour Court, Tudor Road, Manor Park, Runcorn, Cheshire WA7 1SY  
01928 571 801 | [info@distinctivemedical.com](mailto:info@distinctivemedical.com) | [www.distinctivemedical.com](http://www.distinctivemedical.com)

Registered in the UK. Registered office: 3 Seymour Court, Tudor Road, Manor Park, Runcorn, Cheshire WA7 1SY  
VAT Registration No. 775518887