





## TAMPER EVIDENT

Maintaining the integrity of items moving around hospitals has never been more important. Our range of tamper evident bags, seals, tapes and caps provide cost effective solutions to your needs. All of our products can be customised to your requirements. A tamper evident audit-trail has never been easier.







# CONTENTS

---

Custom made bags .....	4
Tamper evident bags .....	5
Medical range.....	6
Cold chain bags .....	7
Transport bags and pouches .....	8
Single use tamper evident bags .....	10
Tamper evident seals .....	11
Plastic seals .....	12
Sterile seals .....	14
Tamper evident labels and tapes .....	15
Tamper evident labels .....	16
Tamper evident tape .....	17
Tamper evident caps .....	18
Sterile tamper evident caps .....	19

# HOW TO ORDER

---



Call on **01928 571801**



Fax on **01928 571430**



Email on **info@distinctivemedical.com**



Live Chat on **www.distinctivemedical.com**

# WAYS TO PAY

---

We accept payments by the following:



We also accept purchase orders from all organisations\* as well as BACS payments.

\* Subject to successful credit check

# CUSTOM MADE BAGS

Tamper evident bags can be manufactured in almost any shape, size or colour to suit different applications. Customised bags have a minimum order quantity of 25 bags per style.



If there is an existing bag that meets your needs, but you would like to tailor it to your organisation's requirements, then this can be easily achieved.

Contact Distinctive Medical today, by phoning **01928 571801** or e-mail: **info@distinctivemedical.com** to receive more information on customised bags.



**COLOUR**  
The colour of your tamper evident bag can be changed to any stock colour.

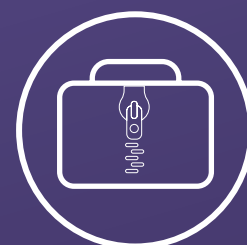
Jade	Light Green	Dark Green	Royal Blue	Light Blue	Dark Blue	Lilac	Yellow	Orange
Pink	Burgundy	Red	Grey	White	Black	Brown	Beige	Clear



**PRINT**  
If there is an existing tamper-evident bag that is suitable for your needs, the text and logo on the bag can be modified, or we can create your design from scratch.



**SIZE**  
Completely bespoke bags can be requested, which allows the bag to be manufactured in your chosen shape, size, text and colour. The bag can be tailored to your requirements.



# TAMPER EVIDENT BAGS

# MEDICAL RANGE

- Use of polyseals provides indication of tampering or unauthorised access and provides an audit trail
- Ensures safety and security in the transportation of medical records and drugs
- Padded to protect fragile items from accidental damage.
- All of our bags can be customised to your requirements



### PHARMACY CARRIER

Code: **CRPHARM**  
Size (mm): **460 x 360 x 150**  
Colour: **GREEN**

### PHARMACY GUSSET

Code: **GTPHARM**  
Size (mm): **410 x 310 x 102**  
Colour: **GREEN**

### CYTOTOXIC CARRIER LARGE

Code: **CRCYTOX**  
Size (mm): **460 x 360 x 102**  
Colour: **YELLOW**

### CYTOTOXIC CARRIER SMALL

Code: **CRCYTOX-SM**  
Size (mm): **300 x 215 x 102**  
Colour: **YELLOW**



### CYTOTOXIC CARRIER REFRIGERATED

Code: **CRCYFRI**  
Size (mm): **460 x 360 x 102**  
Colour: **BLUE/YELLOW**



### MEDICAL RECORDS CARRIER

Code: **MCMED**  
Size (mm): **360 x 305 x 290**  
Colour: **BLUE**



# COLD CHAIN BAGS

- Designed to keep chilled products at critical temperatures (2-8° degrees) for extended periods in transit, without the need for continuous refrigeration, by using gel packs or freezer boards
- Various sizes starting with 3 litre capacity bag, right through to 30 litre vaccine bags
- All cold chain bags are compatible with handy padlock seals for tamper evident security (See page 13 for seals)
- Includes free thermal internal separators in 10L bags and over.
- Stability data available on request

## 3L COLD CHAIN BAG

Code: **3LTV**  
Size (mm): **350 x 260 x 100**  
Colour: **BLUE**



## 10L COLD CHAIN BAG

Code: **10LTV**  
Size (mm): **400 x 280 x 220**  
Colour: **BLUE**



## 20L COLD CHAIN BAG

Code: **20LTV**  
Size (mm): **400 x 280 x 330**  
Colour: **BLUE**



## 30L COLD CHAIN BAG

Code: **30LTV**  
Size (mm): **420 x 340 x 360**  
Colour: **BLUE**

# TRANSPORT POUCHES

- Used for securing and transferring documents and lightweight packages
- Use of tamper-evident polyseal provides indication of tampering or unauthorised access
- Photo sized window for easy personalisation or address cards
- Provides protection for contents during transit
- Made from lightweight and durable PVC
- Available in a range of colours upon request



## A4 FLAT

Code: **A4FLAT**  
Size (mm): **406x 305**  
Colour: **RED/BLUE/CLEAR**



## A3 FLAT

Code: **A3FLAT**  
Size (mm): **406 x 485**  
Colour: **RED/BLUE/CLEAR**



## A5 FLAT

Code: **A5FLAT**  
Size (mm): **300 x 250**  
Colour: **RED/BLUE/CLEAR**



## A7 FLAT

Code: **A7FLAT**  
Size (mm): **170 x 230**  
Colour: **RED/BLUE/CLEAR**

## A6 FLAT

Code: **A6FLAT**  
Size (mm): **240 x 250**  
Colour: **RED/BLUE/CLEAR**





# TRANSPORT BAGS



## A4 20L

Code: **A420L**  
Size (mm): **406 x 305 x 150**  
Colour: **BLUE/RED**

## A4 12L

Code: **A412L**  
Size (mm): **406 x 305 x 100**  
Colour: **BLUE/RED**

## A3 20L

Code: **A430L**  
Size (mm): **406 x 485 x 100**  
Colour: **BLUE/RED**

## A3 90L

Code: **A390L**  
Size (mm): **406 x 485 x 450**  
Colour: **BLUE/RED**



## A5 8L

Code: **A58L**  
Size (mm): **300 x 250 x 100**  
Colour: **BLUE/RED**



## COLLAPSIBLE BOX CARRIER (L)

Code: **ICC1**  
Size (mm): **457 x 356 x 356**  
Colour: **GREEN**



## SMALL HEAVY DUTY MAILING POUCH

Code: **IG410**  
Size (mm): **457 x 305 x 102**  
Colour: **BLUE, GREEN**

## LARGE HEAVY DUTY MAILING POUCH

Code: **IG412**  
Size (mm): **457 x 356 x 102**  
Colour: **BLUE, GREEN**

# SINGLE USE BAGS

- Each bag features a unique identification code (shown in both numerical and barcode format), also duplicated on the tear off receipt.
- Three sizes of bags are available, both clear and white material
- Perfect for single trip deliveries
- Attempts to tamper with the bag will result in a VOID message appearing
- Please specify white or clear when ordering
- Available in boxes of 500



UNIQUE ID NUMBER

## KEEP SAFE BAGS CLEAR S

Code: **KSTE-CI-500**  
Size (mm): **160 x 260**

## KEEP SAFE BAGS CLEAR M

Code: **KSTE-2C-500**  
Size (mm): **225 x 305**

## KEEP SAFE BAGS CLEAR L

Code: **KSTE-C3500**  
Size (mm): **340 x 430**

## KEEP SAFE BAGS WHITE S

Code: **KSTE-I-500**  
Size (mm): **160 x 260**

## KEEP SAFE BAGS WHITE M

Code: **KSTE-2-500**  
Size (mm): **225 x 305**

## KEEP SAFE BAGS WHITE L

Code: **KSTE-3-500**  
Size (mm): **340 x 430**





# TAMPER EVIDENT SEALS



# PLASTIC SEALS

The importance of using a tamper evident seal with your bag is to allow the construction of an audit trail when a number is recorded.

- Tamper evident seals are designed for a range of sealing applications from trolleys, boxes, cases, fire extinguishers, fire exit doors and many more.
- Available in packs of 100 and 1,000
- Easy to apply and designed to easily be removed by hand



## PS2 SEAL

Code: **PS2**

- Printed with 7 digit sequential numbers as standard
- Allows for construction of an audit trail if number is recorded and tracked
- Available numbered or unnumbered

Colour:      



## PS4 SEAL

Code: **PS4**

- New design for easier application
- Easier to read
- Printed with 7 digit sequential numbers as standard
- Seals can be printed with barcodes, logos or sequential numbers.

Colours:     



# PLASTIC SEALS

CUSTOMISATION OPTIONS AVAILABLE  
BARCODES, IMAGES AND CUSTOM MESSAGES



## ENVOTITE SEAL

Code: NSDM (NUMBERED)  
PES (UNNUMBERED)  
Size (mm): 149mm  
Colour: ● ● ● ○ ●

BREAKING STRENGTH: 1/6



## PULL FLY "BABY SEAL"

Code: PULLFLY  
Size (mm): 127mm  
Colour: ● ● ● ● ● ○

BREAKING STRENGTH: 1/6



## PADLOCK SEAL

Code: 18317 (NUMBERED)  
18318 (UNNUMBERED)

Size (mm): 35mm

Colour: ● ● ● ●

BREAKING STRENGTH: 3/6



## SECUREFLEX

Code: SECUREFLEX  
Size (mm): 300mm  
Colour: ● ○

BREAKING STRENGTH: 3/6



## RINGLOK SEAL

Code: R215  
Size (mm): 215mm  
Colour: ● ● ●

BREAKING STRENGTH: 2/6



## GRIP SEAL

Code: GRIPSEAL  
Size (mm): 408mm  
Colour: ● ● ● ○

BREAKING STRENGTH: 4/6



## MINIFLEX

Code: MINIFLEX  
Size (mm): 113mm  
Colour: ● ●

BREAKING STRENGTH: 3/6

# STERILE SEALS

We supply a wide range of sterile, tamper-evident solutions for syringes, vials and IV bag ports. Below is just a small selection of our products, contact us to discuss your specific requirements.



### STERILE IV BAG PORT SEALS

I.V. bag port seals are sterile seals that protect point of entry of I.V. bags. They leave a warning mark on bag ports if a drug has been added or if tampered with. These seals also self-destruct if removed. Colour coded to match common internal procedures or types of drugs.

Code: **ST5112**  
 Size (mm): **31 x 73**  
 Colour:



### STERILE VIAL SEALS

Protect your IV admixture with a sterile vial seal which provides a warning system against tampering. Seals self-destruct upon attempted removal and needle punctures are highly visible. Sealing vial tops and IV add ports provides protection against double dosing and human error.

Code:	Size (mm):	Colour:
<b>7866</b>	<b>13mm</b>	<span style="display: inline-block; width: 10px; height: 10px; background-color: red; border-radius: 50%;"></span> <span style="display: inline-block; width: 10px; height: 10px; background-color: blue; border-radius: 50%;"></span> <span style="display: inline-block; width: 10px; height: 10px; background-color: green; border-radius: 50%;"></span> <span style="display: inline-block; width: 10px; height: 10px; background-color: yellow; border-radius: 50%;"></span>
<b>7867</b>	<b>20mm</b>	<span style="display: inline-block; width: 10px; height: 10px; background-color: red; border-radius: 50%;"></span> <span style="display: inline-block; width: 10px; height: 10px; background-color: blue; border-radius: 50%;"></span> <span style="display: inline-block; width: 10px; height: 10px; background-color: green; border-radius: 50%;"></span> <span style="display: inline-block; width: 10px; height: 10px; background-color: yellow; border-radius: 50%;"></span> <span style="display: inline-block; width: 10px; height: 10px; background-color: orange; border-radius: 50%;"></span>
<b>7887</b>	<b>28mm</b>	<span style="display: inline-block; width: 10px; height: 10px; background-color: red; border-radius: 50%;"></span> <span style="display: inline-block; width: 10px; height: 10px; background-color: blue; border-radius: 50%;"></span> <span style="display: inline-block; width: 10px; height: 10px; background-color: green; border-radius: 50%;"></span> <span style="display: inline-block; width: 10px; height: 10px; background-color: yellow; border-radius: 50%;"></span> <span style="display: inline-block; width: 10px; height: 10px; background-color: orange; border-radius: 50%;"></span>
<b>7885</b>	<b>36mm</b>	<span style="display: inline-block; width: 10px; height: 10px; background-color: red; border-radius: 50%;"></span> <span style="display: inline-block; width: 10px; height: 10px; background-color: blue; border-radius: 50%;"></span> <span style="display: inline-block; width: 10px; height: 10px; background-color: green; border-radius: 50%;"></span>



### SEALS FOR SYRINGES AND CONTAINERS

Tamper evident seals for syringes are easy to use and tear open when ready to use.

Code: **ST4103**  
 Size (mm): **76 x 12**  
 Colour:





# TAMPER EVIDENT LABELS & TAPES

# TAMPER EVIDENT LABELS

- Permanent tamper evidence labels, leave a void/open message on the surface when the label is removed.
- Non-residue labels will not leave any mark on the surface, the label itself will display a void/open message.
- Labels can be customised with your logo or chosen message.
- Labels are supplied in a roll and are self-adhesive for ease of application.
- Ideal for securing sensitive documents and essential supplies.

## PERMANENT TAMPER EVIDENT LABELS

Code:	Size (mm):	Colour:	Pack size:
DR 6002	85 x 25mm	● ●	1000
DR 6004	55 x 20mm		1000
DR 6006	140 x 38mm		500



## NON-RESIDUE TAMPER EVIDENT LABELS

Code:	Size (mm):	Colour:	Pack size:
DR 5997	55 x 20mm	● ●	1000
DR 5995	85 x 25mm		1000
DR 5999	140 x 38mm		500



## TAMPER-EVIDENT SECURITY LABEL

Code:	DR1051
Size (mm):	50 x 152
Roll length:	50m roll
Pack Qty:	20 rolls per pack
Perforated:	Every 152mm
Colour:	●
Pack size:	1000



Customisation available  
to your specification



# TAMPER EVIDENT TAPE

- Removable adhesive residue – A film layer with a VOID/ OPEN security message is left behind when the seal is lifted or removed.
- Tamper-Resistant Tape is available in a variety of sizes with optional dispenser for up to two rolls of tamper tape
- Tamper Tape Strip can be used with boxes, specimen vials and other hard-to-secure items

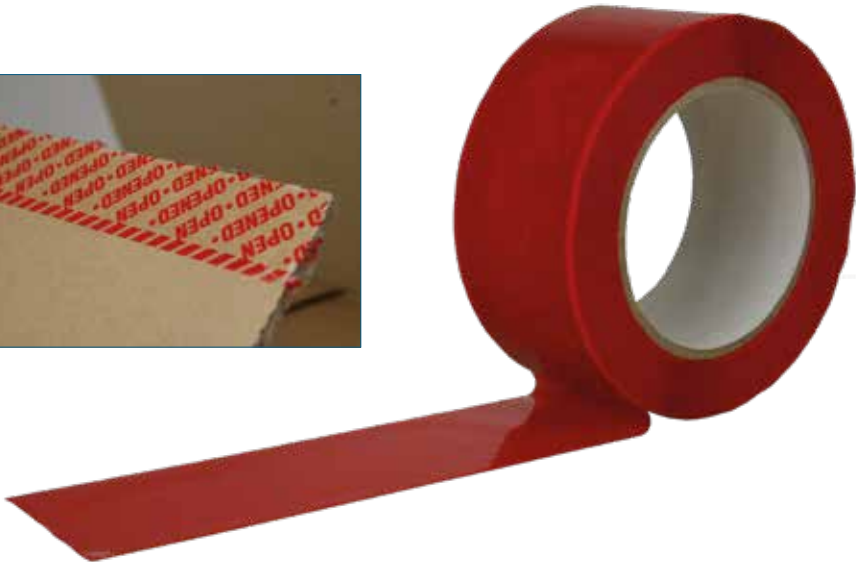


## TAMPER-RESISTANT TAPE

Code:	Width (mm):	Length:	Colour:
8000	12mm	2.7m	<span style="color: red;">●</span>
8002	12mm	2.7m	<span style="color: black;">○</span>
19703	12mm	1.27m	<span style="color: yellow;">●</span>
19027	12mm	1.27m	<span style="color: blue;">●</span>

## TAMPER INDICATING TAPE

Code:	DR490
Size (mm):	50.8mm wide x 50m long
Colour:	<span style="color: red;">●</span> <span style="color: blue;">●</span>



## INTEGRITY TAMPER-EVIDENT TAPE STRIP

Code:	12281
Size (mm):	12mm wide x 2.7m long
Colour:	<span style="color: red;">●</span>







# TAMPER EVIDENT CAPS

# STERILE TAMPER EVIDENT CAPS

Tamper evident caps help to ensure that syringe integrity is maintained from the time it leaves the sterile hood until it is administered by an authorised clinician.



## TAMPER EVIDENT LUER LOCK CAP FOR IV SYRINGES

Code: **57-80**  
Size (mm): **20mm high x 12mm dia**  
Packing: **10 Units per tray, 10 trays per box**  
Colour: **Red Blue Black White**

Available in clear sleeve and opaque sleeve. Please state your preference when ordering.



# STERILE NON-TAMPER EVIDENT CAPS

Luer Lock Caps are ideal for the closure of batch preparations when tamper evidence is not a requirement. Available in a wide range of colours to assist in colour-coded systems.

## LUER LOCK CAP

Code: **57100**  
Size (mm): **15mm high x 12mm dia**  
Packing: **10 Units per tray, 10 trays per box**  
Colour: **Red Yellow Blue Green Purple White**





3 Seymour Court, Tudor Road, Manor Park, Runcorn, Cheshire WA7 1SY  
**01928 571 801 | [info@distinctivemedical.com](mailto:info@distinctivemedical.com) | [www.distinctivemedical.com](http://www.distinctivemedical.com)**

Registered in the UK. Registered office: 3 Seymour Court, Tudor Road, Manor Park, Runcorn, Cheshire WA7 1SY  
VAT Registration No. 775518887